

# ART SPRING 1 KNOWLEDGE ORGANISERS



# Year 5 - Leaves

## What is a collage?

Collage is a technique that involves cutting and pasting various materials onto a surface.

## What makes a successful collage?

### COMPOSITION (layout)

- ✓ Leaves in different directions
- ✓ Leaves coming off the edges
- ✓ Good use of space – not all in one area
- ✓ Different styles and shapes next to each other
- ✓ Colours spread across the black sheets



## What is a resist in art?

It simply means that two materials will not mix. One will stop the other from adhering to the paper or surface you are working on.

## How do you create a leaf wax resist?

Step 1 – Draw the outline of your leaf and the inside detail in oil pastel.

Step 2 – Using watercolours create a blended background.

Step 3 – Now try the inside of the leaf – go over the pastel and see what happens!



Anna Mason  
annamasonart.com

Anna Mason  
watercolours with WOW – © annamasonart.com

## You will know what makes a successful artist research page and about the work of Anna Mason.

To be fully successful your research work must include:

1. Artists name
2. Information about the artist
3. Images of the artist's work
4. Your interpretation of their work (your drawing)
5. Your opinion

## Key words/ Formal Elements

Tone – tone is the lightness or darkness of a colour or shade in a drawing. It helps show shadow and depth.

Hot colours are bright colours like red, orange, and yellow, which make us think of warmth or heat.

Cold colours are cool colours like blue, green, and purple, which remind us of things like water or ice.

Collage – Collage is a technique that involves cutting and pasting various materials onto a surface.

Blending – smoothly moving from one colour to another.



## You will know what oil pastels and drawing inks are and how to blend using them.

## YR6 Spring 1: FROZEN WORLDS

### SIMON BECK: SNOW ARTIST

Simon Beck is an artist, originally from London, who specialises in drawing pictures into snow. Beck's snow art has also taken him around the world: He's created drawings at Banff in Alberta, Canada; Powder Mountain in Utah; Yakutsk in Siberia, Russia, Switzerland and China. The drawings are often mathematical shapes — as a child, Beck was interested in geometry, and he studied engineering at Oxford University.

The first stage consists of careful measuring by compass bearings. He determines distance simply by counting paces. The measuring stage can take about two hours, he says.

After the primary straight lines and curves are made, Beck adds secondary lines. For the final stage of the process, he shades areas of the design by walking back and forth, which normally takes around five hours. Overall, it takes nine to eleven hours to complete a drawing (depending on the weather). Snow art often lasts until the next snowfall, anywhere from a few hours to eight weeks. "The key to the whole thing is to get the good photographs of the finished art," says Beck, who then shares his photos on his social media site attracting many followers.



## KEYWORDS

Composition	Arrangement/layout
Mixed media	When different techniques and media are used in the same piece of work.
Wax resist	A process in which two materials <b>resist</b> or <b>repel</b> each other to create a piece of <b>art</b> , eg. oil pastels and inks.
Colour Blending	The technique of gently intermingling two or more <b>colours</b> to create a gradual transition or to soften lines. As an artist, it's important to practice <b>blending</b> in any medium you choose to work with.
Geometric shapes	<b>Shapes</b> made out of points and lines including triangles, squares and circles.
Tonal Shading	Using a pencil to complete shading from light to dark gradually.
Land art	<b>Land art</b> or <b>earth art</b> that is made directly in the landscape, sculpting the <b>land</b> itself into earthworks or making structures in the landscape using natural materials such as rocks or twigs.

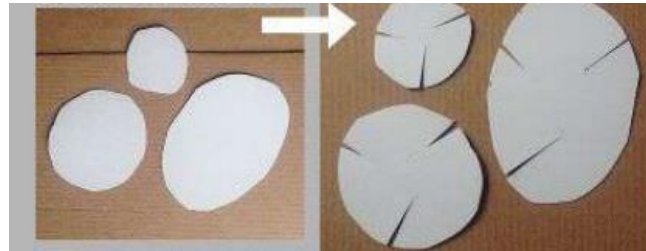
# Year 7 – Cardboard Relief

## Who is Darrell Wakelam?

Darrell Wakelam is an artist who creates amazing bug sculptures out of cardboard! He carefully cuts, folds, and layers the cardboard to make 3D insect shapes. His artwork shows how we can turn simple materials into something beautiful while also thinking about nature, recycling, and the environment in creative ways.

## How do you cut and fold cardboard to make it appear 3D?

1. Cut the shapes you need for the sections of your insect.  
Then cut slits into hem like the examples to the right.



1. Pull these discs into 3D shapes and attach them to a base. This forms the body of your insect.



## Key words/ Formal Elements

**Mark making** in art refers to the different kinds of lines, shapes, and textures an artist creates with their tools, such as pencils, brushes, or pens. It's how artists use their marks to express ideas, emotions, or add detail to their artwork.

**Tone** – tone is the lightness or darkness of a colour or shade in a drawing. It helps show shadow and depth.

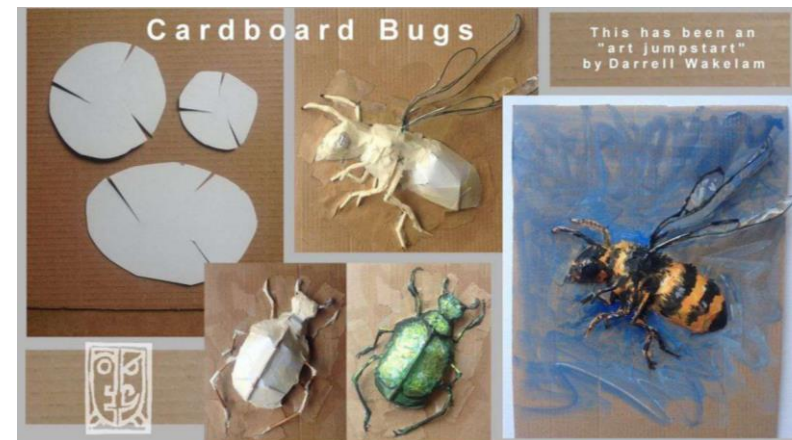
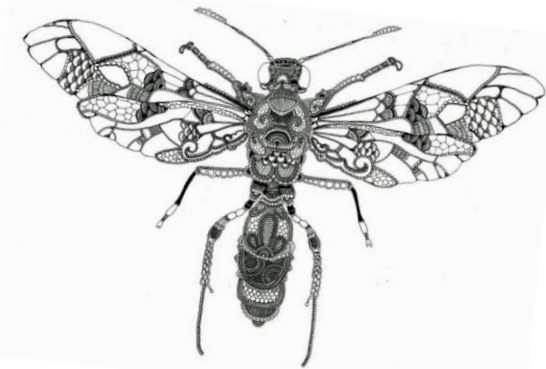
**Blending** – smoothly moving from one colour to another.

**Cardboard relief** is a technique in art where cardboard is used to create a raised, three-dimensional design on a flat surface. Artists cut, layer, and glue pieces of cardboard to add depth and texture to their artwork, making it appear as though parts of the image are popping out.

You will know what makes a successful artist research page and about the work of Rosalind Monks and Joe MacGown.

To be fully successful your research work must include:

1. Artists name
2. Information about the artist
3. Images of the artist's work
4. Your interpretation of their work (your drawing)
5. Your opinion



You will know about the artist Darrell Wakelam and his 3D cardboard art sculptures.

# Year 8 - Watercolour Techniques

How different colours evoke different feelings and emotions.

Green - nature, cool, money, freshness, growth, sickness, jealousy

Yellow - happiness, warmth, cheery, laughter, light-hearted

Orange - happiness, enthusiasm, energy, warmth

Blue - sadness, loneliness, cold, calm, serenity, freshness

Purple - royalty, expensive, wealth, power

Red - anger, love, energy, passion

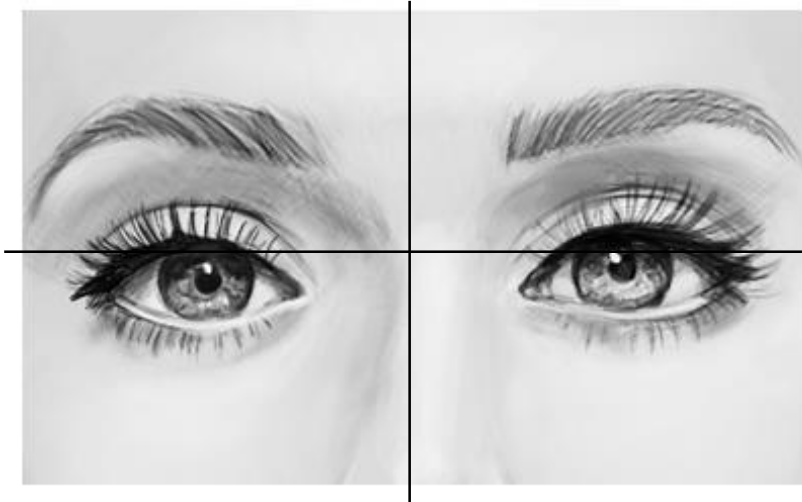


What is observational drawing?

Observational drawing is when you draw something by looking at it closely in real life, rather than copying from memory or a picture. You carefully study the object's shape, size, and details, like light and shadows, to make your drawing as accurate as possible.

What is the grid technique?

The grid method helps by breaking a picture into smaller squares, making it easier to draw each part accurately.



Key words/ Formal Elements

Scribble technique - The scribble technique in art involves creating marks or drawings by making quick, loose, and often messy lines or shapes. It's a way to express movement, energy, or emotion, and can be used to create texture or add a sense of spontaneity to an artwork.

Tone - tone is the lightness or darkness of a colour or shade in a drawing. It helps show shadow and depth.

Blending - smoothly moving from one colour to another.

What is a graphite transfer?

A graphite transfer in art is a technique used to transfer an image or drawing from one surface to another using graphite (pencil). See below for how you could use this for your eyes.

Step 1

cover the back of the image with a thin layer of graphite, rubbing it in with a pencil or graphite stick. This creates a "carbon layer" on the back. Make sure the entire area that you'll trace over is covered with graphite. You don't need to press too hard, just enough to cover the paper lightly.



Step 2

Start tracing over the lines of the image on the front of the tracing paper with a firm, steady hand. As you trace, the pressure you apply will transfer the graphite from the back of the tracing paper to the final surface.

**TOP TIP - Go slowly and make sure you trace every important line of the image!**

