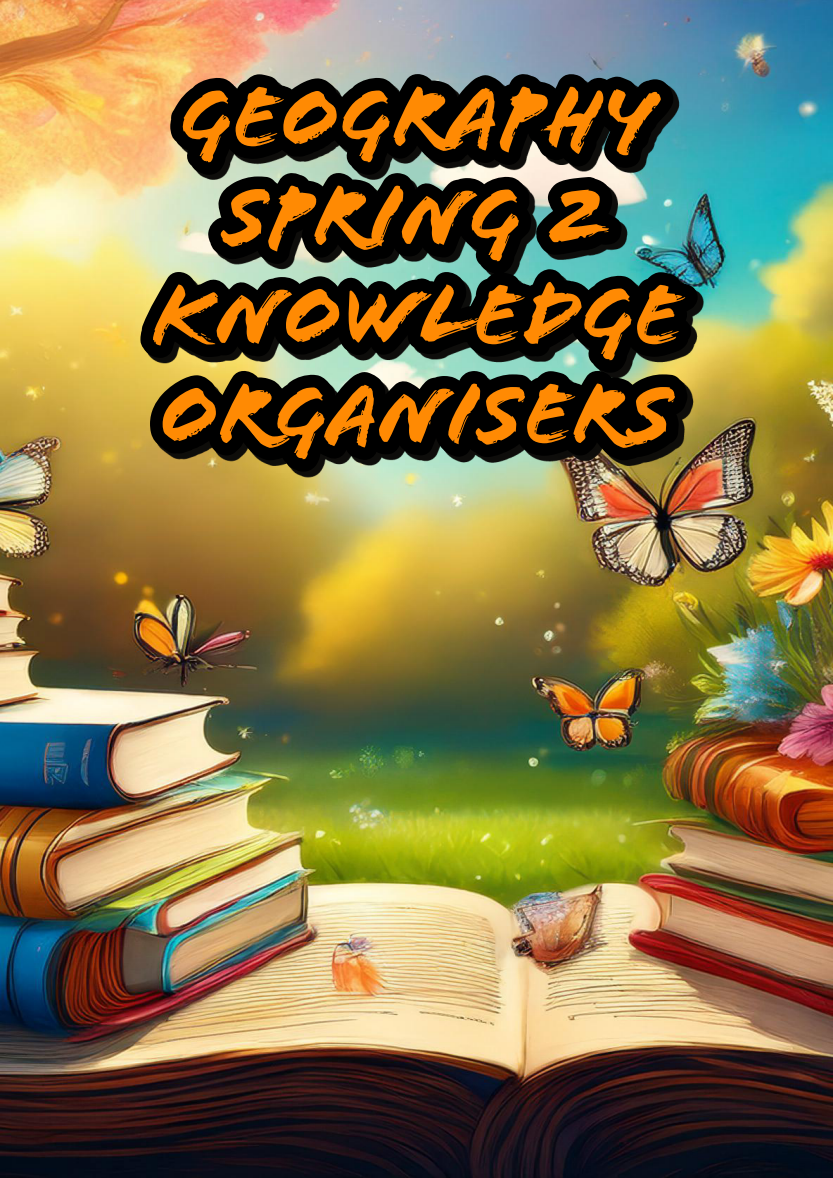


GEOGRAPHY SPRING 2 KNOWLEDGE ORGANISERS



Year 5 Spring 2

Egypt – The Nile



The Journey of the Nile (Source to Mouth)

- **Source** – where the river begins (White Nile & Blue Nile)
- **Tributaries** – smaller rivers that join the Nile
- The river flows north across Africa
- **Mouth** – where the river ends
- **Delta** – forms at the mouth where the river meets the sea
- The Nile Delta is **fertile** because the river drops **silt**

IMPORTANCE OF THE NILE TO THE EGYPTIANS



Word	Meaning
River	Moving water that flows across land
Source	Where a river begins
Mouth	Where a river ends at the sea
Delta	Land formed where a river meets the sea
Tributary	A smaller river that joins a larger one
Silt	Fine soil carried by rivers
Fertile	Good for growing crops
Dam	A wall built to control river flow
Habitat	The natural home of plants or animals
Resources	Useful things from nature
Livelihood	How people earn money

Locational Knowledge

- Continent: **Africa**
- Direction of flow: **South to North**
- Sea at the mouth: **Mediterranean Sea**

Two main rivers:

- **White Nile** – begins near **Lake Victoria**
- **Blue Nile** – begins in the **Ethiopian Highlands**
- The two rivers join and continue as the **River Nile** into Egypt.

Human and Physical - the Nile Delta

Physical Features

- Delta
- Fertile soil
- Wetlands
- Mediterranean Sea
- Silt

Human Features

- Farms
- Towns and cities
- Ports
- Roads and bridges
- Boats and transport routes

The Nile Delta is important because **fertile land and water attract people**.

Geographer Thinking

Rivers shape where people live

Physical geography affects human activity

Human decisions can change environments

Geographers explain cause and effect using evidence

Year 6 Spring 2
Natural disasters



Case Study Skills

A **case study** helps us understand:

- where a disaster happened
- what caused it
- how people and places were affected



Word	Meaning
Hurricane	A strong tropical storm with powerful winds.
Storm surge	A rise in sea water caused by strong winds during a storm.
Flooding	When water covers land that is usually dry.
Evacuation	When people leave an area to stay safe.
Drought	A long period with little or no rain.
Reservoir	A place where water is stored for people to use.
Crop failure	When crops die because there is not enough water.
Landslide	The sudden movement of earth or rocks down a slope.
Slope	A slanted surface or hillside.
Trigger	Something that causes a natural disaster.

📍 Locational Knowledge

- Hurricanes form over **warm tropical oceans**, close to the Equator.
- Hurricane Ida affected **Louisiana, USA**, a low-lying coastal region.
- Droughts often occur in areas with **low rainfall** or very **hot climates**.
- Landslides are common in **mountainous or hilly regions** with steep slopes.
- Natural disasters often affect places differently depending on **location and environment**.

🗺️ Map & Diagram Skills

- Locate **Louisiana (USA)** on a world map and identify nearby oceans.
- Identify **tropical regions** where hurricanes are most likely to form.
- Label a **hurricane diagram** (eye, strong winds, storm surge).
- Interpret diagrams showing **causes and effects** of drought.
- Sketch and label a **hillside before and after a landslide**, showing slope and debris.

🔄 Key Questions to Remember

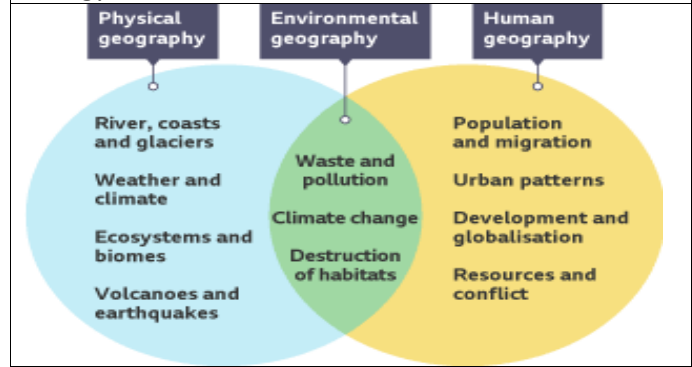
- Why do hurricanes form over warm oceans?
- How do droughts affect people and farming?
- What makes a slope unstable?
- How can people reduce the impact of natural disasters?

Year 8 Spring 2
China continued



☀ Did You Know?

- China is the fourth-largest country in the world (9.6 million km²).
- Around one-third of China is mountainous.
- The Yangtze River is Asia's longest river (6,300 km).
- The Tibetan Plateau is known as "the Roof of the World".
- China is heavily affected by the East Asian summer monsoon.
- The Three Gorges Dam is the world's largest hydroelectric power station.
- China is the world's largest producer of renewable energy.



Word	Student-Friendly Meaning
Climate	The long-term pattern of weather in a place.
Biome	A large region with a specific climate, plants and animals.
Monsoon	Seasonal winds are bringing heavy rainfall.
Arid	Very dry with little rainfall.
Relief	The shape and height of the land.
Agricultural productivity	How successful farming is in an area.
Hydroelectric	Electricity is produced from moving water.
Flood mitigation	Reducing the risk or impact of flooding.
Renewable energy	Energy that will not run out (e.g. wind, solar).
Interaction	How physical and human factors influence each other.

📍 Locational & Background Knowledge

Climate & Biomes

- East & South China → humid monsoon climate
- North-West China → arid desert climate
- Western mountains → cold alpine climate

Major biomes include:

- Temperate forest, Tropical forest, Grassland, Desert, Wetlands

Physical Geography Patterns

- Yangtze River Basin → fertile soil, reliable water, flat land
- Tibetan Plateau → high relief, harsh climate, sparse population
- Western deserts → low rainfall, poor farming potential

Physical geography strongly influences:

- Farming, Settlement, Economic activity, Population density

🌍 Managing Physical Environments

China faces physical challenges:

- Flooding along major rivers
- Uneven water distribution
- Environmental degradation
- High energy demand

Management strategies include:

- Three Gorges Dam → hydroelectric power + flood mitigation
- Solar and wind farms → renewable energy expansion
- Afforestation & reforestation → reduce soil erosion & improve sustainability

These bring both:

- ✓ Economic benefits
- ✗ Social and environmental costs

🧠 Geographical Skills & Enquiry

- Interpret climate graphs.
- Compare physical regions (east vs west).
- Explain cause and consequence.
- Link physical geography to development and inequality.
- Structure 4–6 mark explanations.
- Write balanced evaluative paragraphs.